

Mango64R3 Hardware Manual

[S3C6410 EVB]

<http://www.mangoboard.com/>

<http://cafe.naver.com/embeddedcrazyboys>

Crazy Embedded Laboratory

Document History

Revision	Date	Change note

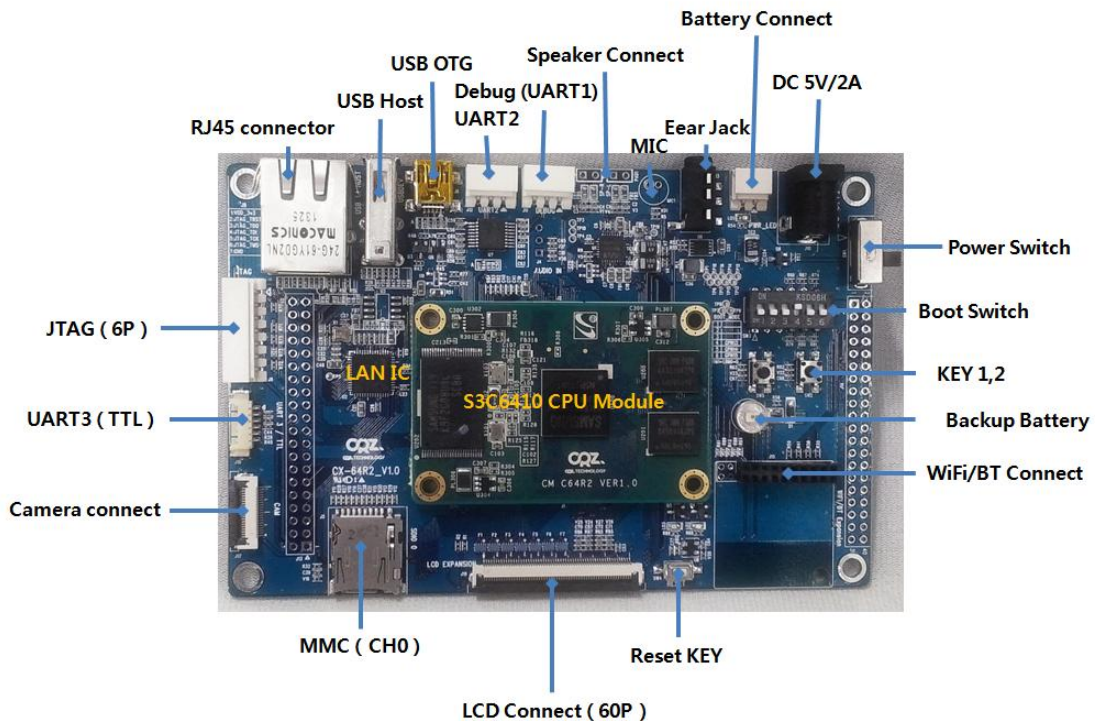
목차

제품소개	4
SPECIFICATION	5
PCB SIZE	5
Manual	오류! 책갈피가 정의되어 있지 않습니다.

제품소개

ARM1176 삼성 S3C6410 CPU로 제작된 자작 보드,
Firmware, RTOS, Linux, Wince 공부에 적합한 보드로서,
CPU 모듈 보드와 확장보드로 나누어 설계를 했습니다.

- Firmware, RTOS (eCoS외 기타), Widows CE 6.0, Linux 지원
- USB Host, USB Device, 10/100 Mbps Ethernet, microSD socket, Audio Codec 기본 지원
- WIFI/Bluetooth, 각종 TFT LCD, GPS, Camera 인터페이스 확장 지원



문의: help@crz-tech.com

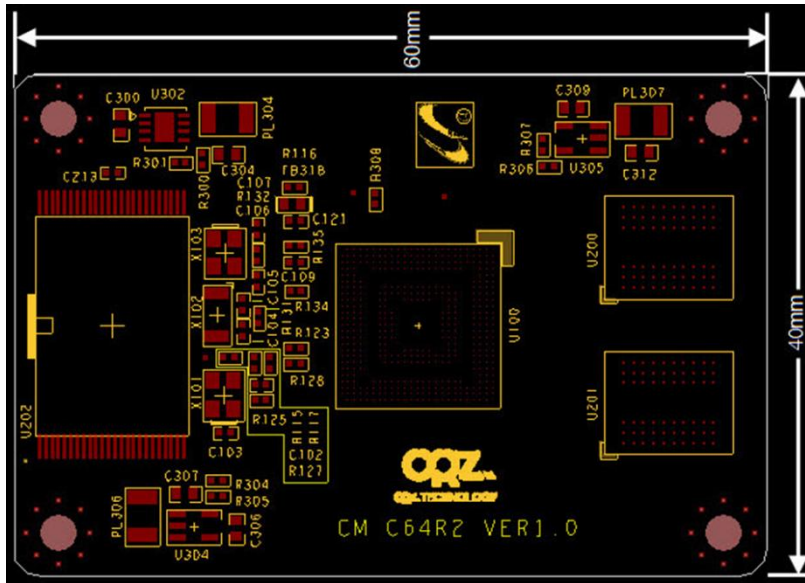
팩스: 031-701-5024, 연락처: 031-701-5057

SPECIFICATION

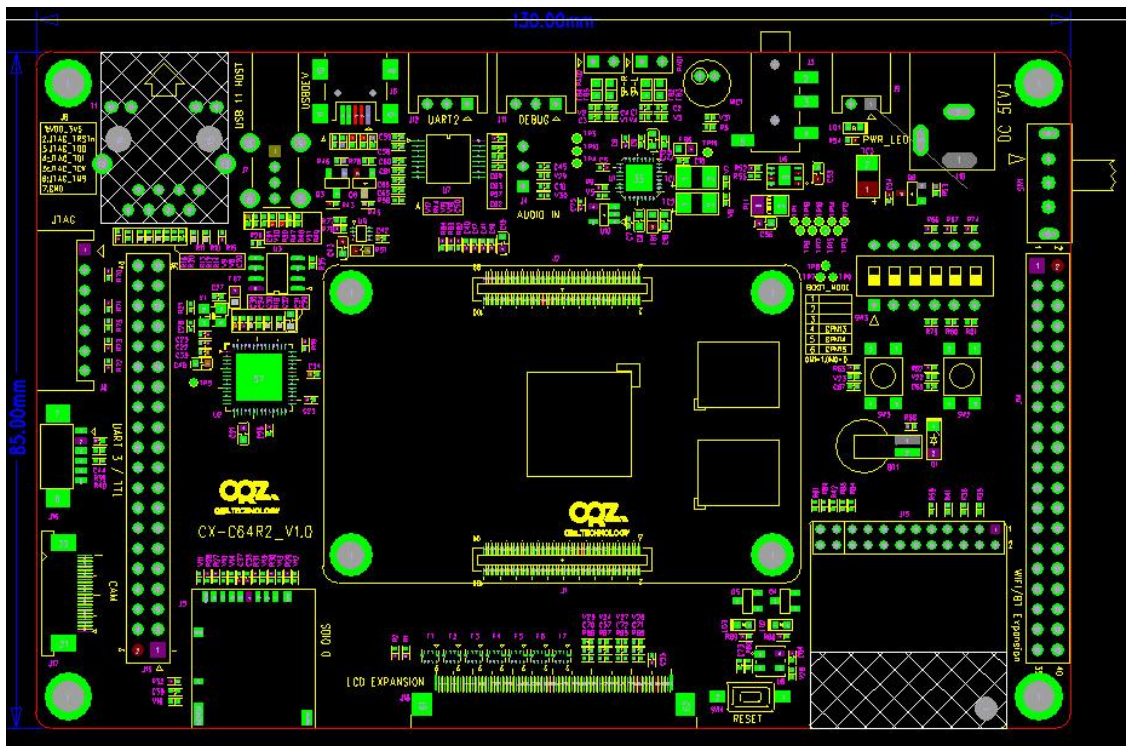
CPU	Samsung S3C6410	ARM1176JZF-S 533/667MHz
Memory	Mobile DDR	128Mbytes
	SLC NAND Flash	256Mbytes
Display	7" WVGA(800x480) Color TFT	with Touch Screen Interface
Audio	Wolfson WM8960 Audio Codec	with 1W Stereo Speaker Amplifier
Ethernet	SMSC LAN9220	10/100Mbps
USB	USB 1.1 Host	
	USB 2.0 OTG	
SD	SD/MMC Port 0	Standard SD Connector
	SD/MMC Port 1	WiFi Expansion Connector
	SD/MMC Port 2	Expansion Connector
UART	UART Port 0	Bluetooth or Expansion Connector
	UART Port 1	Standard Debug Port
	UART Port 2	Expansion Connector
	UART Port 3	GPS or Expansion
JTAG	Standard ARM	JTAG Interface
WiFi/Bluetooth	SDIO ,802.11b,g,n 지원, BT(UART0 or SDIO)	
GPS	UART3	
Camera	support Interlaced and Non-Interlaced CCIR601/656 Standard Camera Interface	
Keys	2 General Purpose Keys	
	1 Reset Keys	
Indicators	2 Indicator LED controllable	GPIO ports
Expansion Connectors	IrDA, Camera, I2S, SPI0/SPI1, SDIO0/2, EBI, UART, LCD	

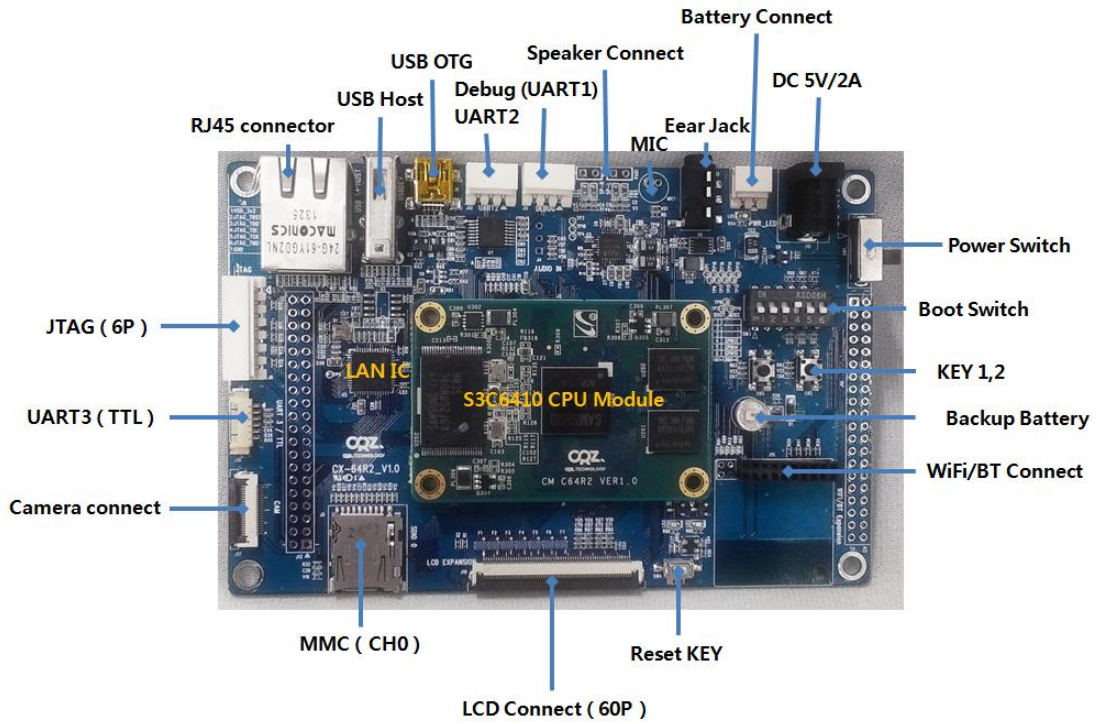
PCB SIZE

<CM-S3C6410 CPU Module>

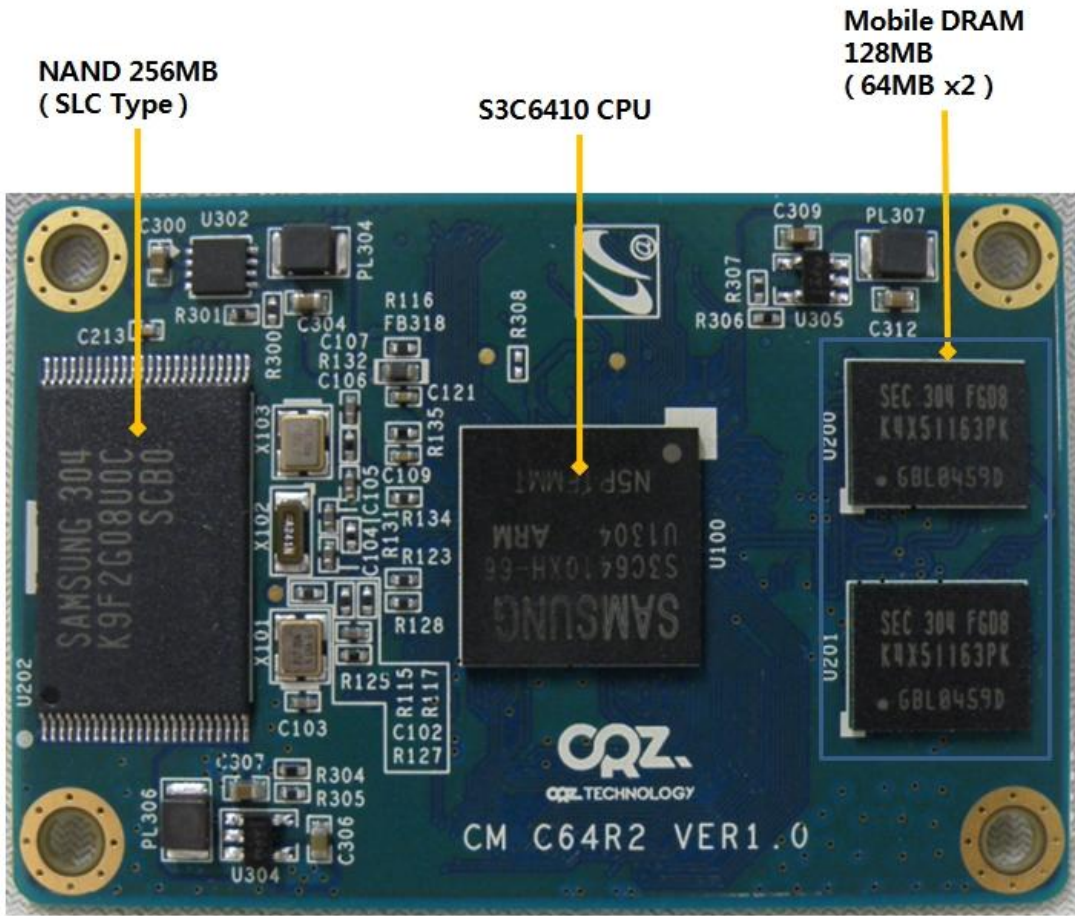


<CX-S3C6410 Base >

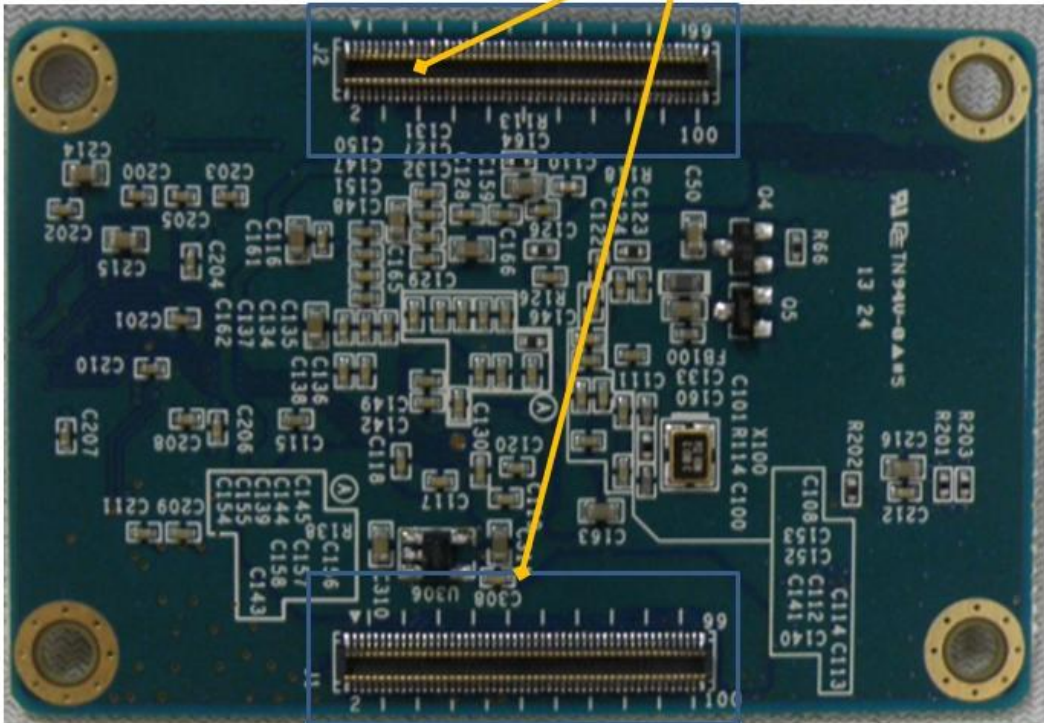




<CPU Module>



100 expansion Connect x 2ea



부팅 모드

NAND Mode : 2, 3 ON , 나머지 Off

